

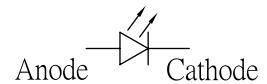
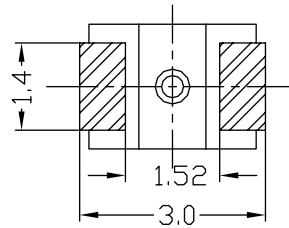
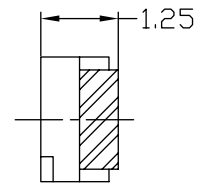
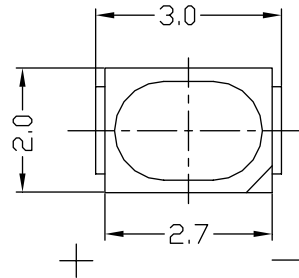
■ **Features**

- High Luminous PLCC2 Top SMD LEDs
- 3.0x2.0x1.25mm Standard Directivity
- Superior Weather-resistance
- Water Clear Type
- 2Kpcs / Reel

■ **Applications**

- Electronic Signs And Signals
- Small Area Illuminations
- Back Lighting
- Other Lighting

■ **Outline Dimension**



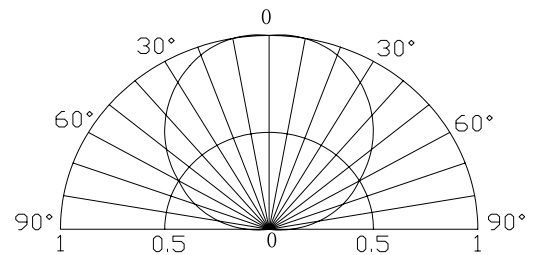
Unit:mm
Tolerance:±0.25mm

■ **Absolute Maximum Rating**

(Ta=25°C)

Item	Symbol	Value		Unit
		W/M/B/PG	Y/R	
DC Forward Current	I _F	25	25	mA
Pulse Forward Current*	I _{FP}	100	100	mA
Reverse Voltage	V _R	5	5	V
Power Dissipation	P _D	90	65	mW
Operating Temperature	Topr	-25 ~ +85		°C
Storage Temperature	Tstg	-35 ~ +85		°C
Lead Soldering Temperature	Tsol	260°C/5sec		-

■ **Directivity**



*Pulse width Max.10ms Duty ratio max 1/10

■ **Electrical -Optical Characteristics**

(Ta=25°C)

Part Number	Color			V _F (V)			I _R (μA)	I _v (mcd)			λD (nm)			2θ1/2(deg)
				Min.	Typ.	Max.	Max.	Min.	Typ.	Max.	Min.	Typ.	Max.	Typ.
				I _F =20mA			V _R =5V			I _F =20mA				
LP-W43020C1C	Pure White	W4		2.8	3.2	3.6	10	1400	1600	1800	-	6500K	-	120
LP-M53020C1C	Warm White	M5		2.8	3.2	3.6	10	1400	1600	1800	-	3000K	-	120
LP-B53020C1C	Blue	B5		2.8	3.2	3.6	10	100	200	300	465	470	475	120
LP-G53020C1C	Pure Green	G5		2.8	3.0	3.6	10	400	600	800	520	525	530	120
LP-Y53020C1C	Yellow	Y5		1.8	2.1	2.6	10	100	200	300	585	590	595	120
LP-R53020C1C	Red	R5		1.8	2.1	2.6	10	100	200	300	620	625	630	120

*1 Tolerance of dominant wavelength is ±1nm

*2 Tolerance of luminous intensity is ±15%